



Composition of the codes: Ex: B3538L01SE

- B3538 = model
- L01 = profiles finishing
- SE = panels finishing

Flex is the further implementation of a Samo series whose strengths are: extreme adaptability, **the reduced space, freedom of movement, furnishing the smaller or more "difficult" bathroom.**

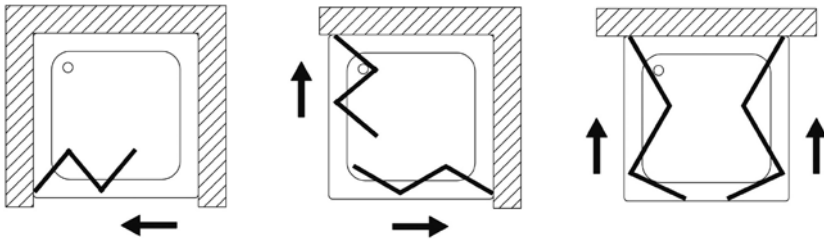
In fact, Flex is a product **acceptable to those involved in take care of other people:** in the version with 100 cm height it increases the satisfaction of those who are outside and inside the shower. Corner, for niche and three sides, Flex is a shower built with aluminum, glass or polystyrene panels and jointed with special **hinges that can curl up inside and outside.** In this way, the shower can be extended across the area of the shower but when not in use, **it folds to the wall gives you total freedom of movement.**

Flex is in fact devoid of fixed upper and lower profiles, so it's perfect to be installed near a window or in very small or middle compartment, or in rooms without shower tray, so that when folded in on itself and does not disappear completely way.

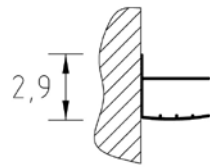
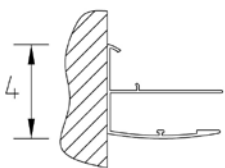
Convenience and comfort to maximize the space.

All models can be personalized for showers of special measures.

Flex solutions



Wall profiles dimensions



Finishing profiles

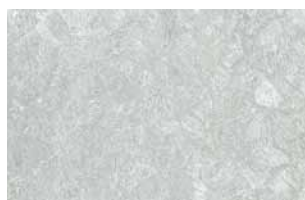


L01
white

Finishing panels



TR
transparent



SE
Polystyrene Setola

Serie **Flex**



Corner enclosure with two bifolding panels

Folding opening inwards and outwards with hinges at 180°.

- **Aluminium finishing profiles:**
L01 white
- **Tempered glass finishing panels:**
TR transparent
- **Polystyrene finishing panels:**
SE Setola

Shower enclosure, art. B3525L01TR

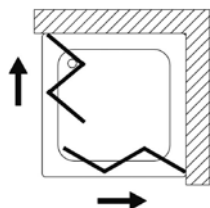
Article	Height [cm]	Extension [cm]	Volume [dm ³]	Weight [kg]	Panels finishing	L01
B3522	185	64-68	94	28	TR	[Light Blue]
				22	SE	
B3523	185	68-72	101	29	TR	[Light Blue]
				22	SE	
B3524	185	72-76	103	30	TR	[Light Blue]
				22	SE	
B3525	185	76-80	109	32	TR	[Light Blue]
				23	SE	
B3526	185	80-84	114	33	TR	[Pink]
				23	SE	
B3527	185	84-88	120	34	TR	[Pink]
				24	SE	
B3528	185	88-92	126	35	TR	[Light Blue]
				25	SE	
B3543	185	68-72/88-92	126	37	TR	[Light Blue]
				26	SE	
B3544	185	72-76/88-92	126	38	TR	[Pink]
				26	SE	

SPECIAL PRODUCTS

Request an estimate by enclosing a drawing and exact measurements: the Customers Office will be able to give confirmation on the feasibility of the article requested, including for projects different than those shown in the chart. It's necessary the confirmation of the order in writing. In case of cancellation after the acceptance, the total cost of the order will be charged.

Limits of measurements:

- Height max 200 cm.
- Height min 100 cm.
- Width max 92 cm. (TR)
- Width max 120 cm. (SE)
- Width min 46 cm.



Packaging is composed of n° boxes: 1

Lower width - Greater height +40%	Greater height +40%	Greater width - Greater height +50%
Lower width +20%	Standard price of reference	Greater width +30%
Lower width - Lower height +30%	Lower height +20%	Greater width - Lower height +40%

Sector	Delivery Ex Works
Sector A	1-2 Weeks
Sector B	3 Weeks
Sector C	4-5 Weeks
Sector N	bespoke and new products



Corner enclosure with two bifolding panels

Dedicate solutions for specific needs, for example for elderly or disabled people.

- **Aluminium finishing profiles:**
L01 white
- **Polystyrene finishing panels:**
SE Setola

SHOWER ENCLOSURE
EASYLIFE

Shower enclosure, art. B3628L01SE

Article	Height [cm]	Extension [cm]	Volume [dm ³]	Weight [kg]	Panels finishing	L01
B3625	100	76-80	51	12	SE	
B3628	100	88-92	59	14	SE	

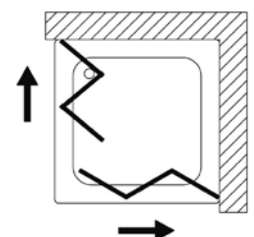
SPECIAL PRODUCTS

Request an estimate by enclosing a drawing and exact measurements: the Customers Office will be able to give confirmation on the feasibility of the article requested, including for projects different than those shown in the chart. It's necessary the confirmation of the order in writing. In case of cancellation after the acceptance, the total cost of the order will be charged.
Limits of measurements:
Height max 100 cm.
Height min 50 cm.
Width max 120 cm.
Width min 46 cm.

Lower width +20%	Standard price of reference	Greater width +30%
Lower width - Lower height +30%	Lower height +20%	Greater width - Lower height +40%

Packaging is composed of n° boxes: **1**

Sector	Delivery Ex Works
Sector A	1-2 Weeks
Sector B	3 Weeks
Sector C	4-5 Weeks
Sector N	bespoke and new products





Three sides corner enclosure with bifolding panels

Folding opening inwards and outwards with hinges at 180°.

- **Aluminium finishing profiles:**
L01 white
- **Tempered glass finishing panels:**
TR transparent
- **Polystyrene finishing panels:**
SE Setola

Shower enclosure, art. B3538L01SE

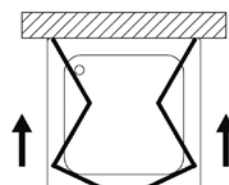
Article	Height [cm]	Extension [cm]	Front measurement standard	Volume [dm ³]	Weight [kg]	Panels finishing	L01
B3532	185	63-67	65	127	39	TR	
					31	SE	
B3533	185	67-71	70	137	40	TR	
					32	SE	
B3534	185	71-75	75	144	41	TR	
					33	SE	
B3535	185	75-79	77	150	42	TR	
					34	SE	
B3536	185	79-83	80	161	43	TR	
					35	SE	
B3537	185	83-87	85	165	44	TR	
					36	SE	
B3538	185	87-91	90	174	45	TR	
					37	SE	

SPECIAL PRODUCTS

Request an estimate by enclosing a drawing and exact measurements: the Customers Office will be able to give confirmation on the feasibility of the article requested, including for projects different than those shown in the chart. It's necessary the confirmation of the order in writing. In case of cancellation after the acceptance, the total cost of the order will be charged.

Limits of measurements:
 Height max 200 cm.
 Height min 100 cm.
 Width max 91 cm. (TR)
 Width max 100 cm. (SE)
 Width min 36 cm.

Lower width - Greater height +40%	Greater height +40%	Greater width - Greater height +50%
Lower width +20%	Standard price of reference	Greater width +30%
Lower width - Lower height +30%	Lower height +20%	Greater width - Lower height +40%



Packaging is composed of n° boxes: **1**

Sector	Delivery Ex Works
Sector A	1-2 Weeks
Sector B	3 Weeks
Sector C	4-5 Weeks
Sector N	bespoke and new products



Three sides corner enclosure with bifolding panels

Dedicate solutions for specific needs, for example for elderly or disabled people.

- Aluminium finishing profiles:
L01 white
- Polystyrene finishing panels:
SE Setola

SHOWER ENCLOSURE
EASYLIFE

Shower enclosure, art. B3636L01SE

Article	Height [cm]	Extension [cm]	Front measurement standard	Volume [dm ³]	Weight [kg]	Panels finishing	L01
B3636	100	79-83	80	63	15	SE	
B3638	100	87-91	90	70	18	SE	

SPECIAL PRODUCTS

Request an estimate by enclosing a drawing and exact measurements: the Customers Office will be able to give confirmation on the feasibility of the article requested, including for projects different than those shown in the chart. It's necessary the confirmation of the order in writing. In case of cancellation after the acceptance, the total cost of the order will be charged.

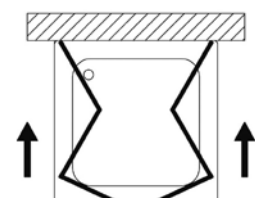
Limits of measurements:

- Height max 100 cm.
- Height min 50 cm.
- Width max 100 cm.
- Width min 36 cm.

Lower width +20%	Standard price of reference	Greater width +30%
Lower width - Lower height +30%	Lower height +20%	Greater width - Lower height +40%

Packaging is composed of n° boxes: **1**

Sector	Delivery Ex Works
Sector A	1-2 Weeks
Sector B	3 Weeks
Sector C	4-5 Weeks
Sector N	bespoke and new products





Three folding panels

Folding opening inwards and outwards with hinges at 180°.

- Aluminium finishing profiles:
L01 white
- Tempered glass finishing panels:
TR transparent
- Polystyrene finishing panels:
SE Setola

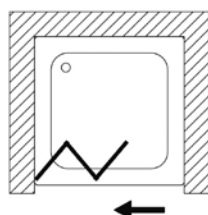
Shower enclosure, art. B3518L01TR

Article	Height [cm]	Extension [cm]	Volume [dm ³]	Weight [kg]	Panels finishing	L01
B3512	185	63-67	63	17	TR	
				11	SE	
B3513	185	67-71	67	17	TR	
				12	SE	
B3514	185	71-75	70	18	TR	
				12	SE	
B3515	185	75-79	74	19	TR	
				13	SE	
B3516	185	79-83	78	19	TR	
				13	SE	
B3517	185	83-87	81	20	TR	
				13	SE	
B3518	185	87-91	94	20	TR	
				14	SE	

SPECIAL PRODUCTS

Request an estimate by enclosing a drawing and exact measurements: the Customers Office will be able to give confirmation on the feasibility of the article requested, including for projects different than those shown in the chart. It's necessary the confirmation of the order in writing. In case of cancellation after the acceptance, the total cost of the order will be charged.

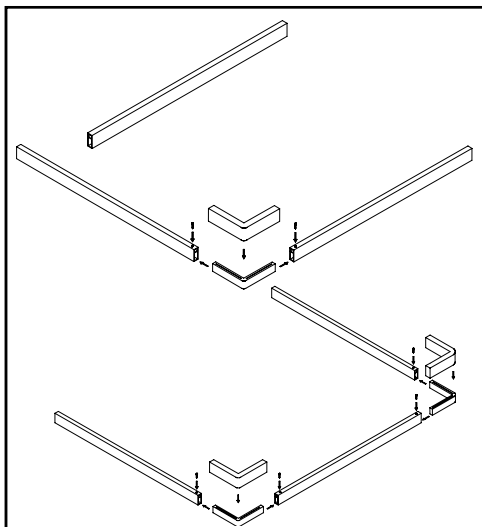
Limits of measurements:
 Height max 200 cm.
 Height min 100 cm.
 Width max 91 cm. (TR)
 Width max 120 cm. (SE)
 Width min 46 cm.



Packaging is composed of n° boxes: 1

Lower width - Greater height +40%	Greater height +40%	Greater width - Greater height +50%
Lower width +20%	Standard price of reference	Greater width +30%
Lower width - Lower height +30%	Lower height +20%	Greater width - Lower height +40%

Sector	Delivery Ex Works
Sector A	1-2 Weeks
Sector B	3 Weeks
Sector C	4-5 Weeks
Sector N	bespoke and new products



Bottom seal edges on one, two or three sides

Bottom seal edges are available upon request as the shower enclosure is not fitted with either top or bottom profiles. The seal edge is supplied in one length: cut the seal edge to the appropriate size when installing it. The seal edges are suitable for Flex niche (art. CO118), corner with two sides (art. CO128), and corner with three sides (art. CO138).

Article	Maximum Overall [cm]	L01
CO118	91	
CO128	92x92	
CO138	91x91x91	

SPECIAL PRODUCTS

Request an estimate by enclosing a drawing and exact measurements: the Customers Office will be able to give confirmation on the feasibility of the article requested, including for projects different than those shown in the chart. It's necessary the confirmation of the order in writing. In case of cancellation after the acceptance, the total cost of the order will be charged

Lower width - Greater height +40%	Greater height +40%	Greater width - Greater height +50%
Lower width +20%	Standard price of reference	Greater width +30%
Lower width - Lower height +30%	Lower height +20%	Greater width - Lower height +40%



Sector	Delivery Ex Works
Sector A	1-2 Weeks
Sector B	3 Weeks
Sector C	4-5 Weeks
Sector N	bespoke and new products